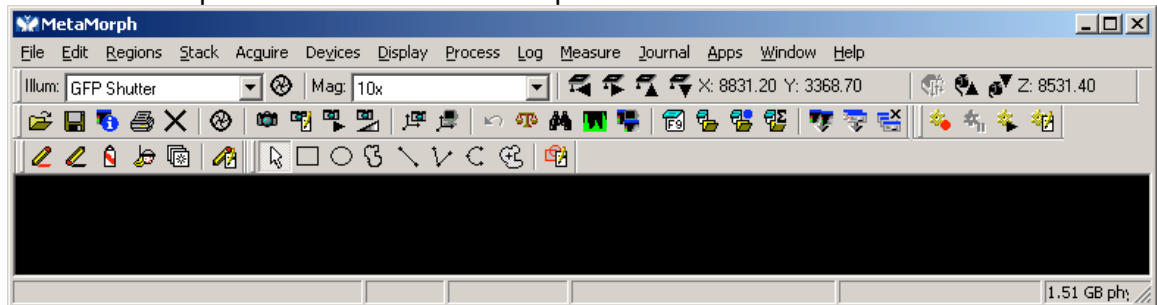


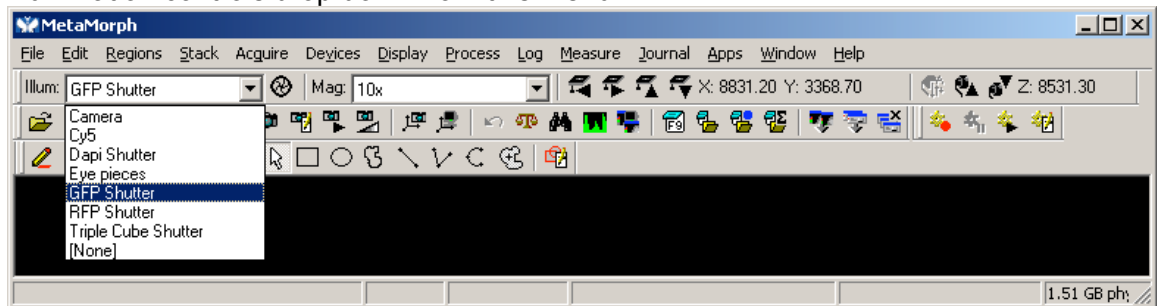
Start Metamorph software from Desktop shortcut labeled Metamorph



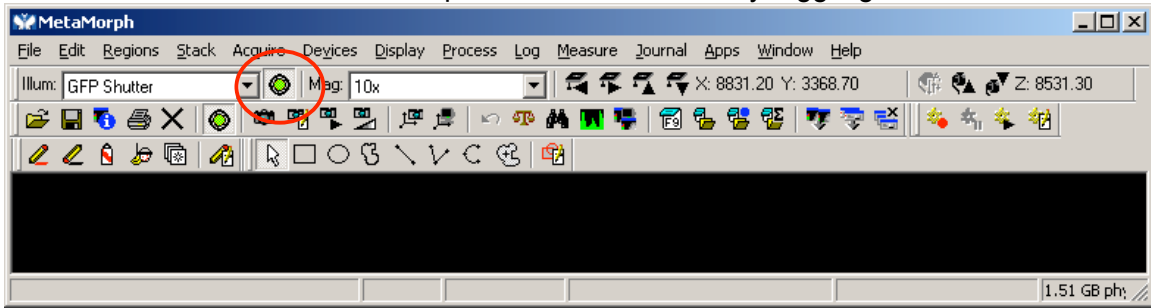
What Metamorph looks like after it starts up.



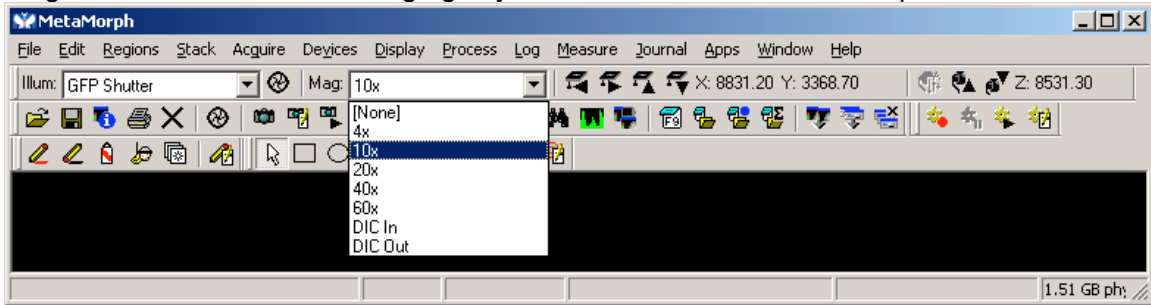
Illumination controls drop down from this menu.



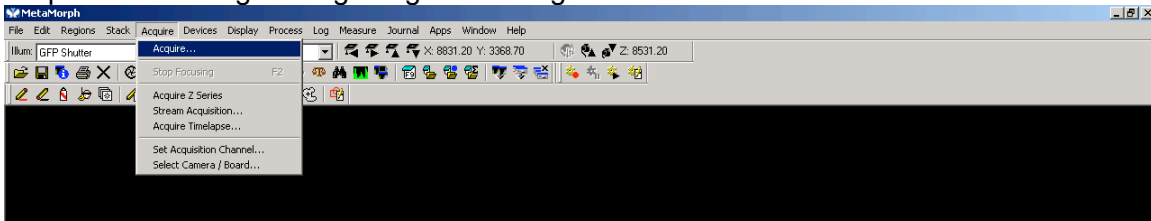
After choose an illumination can open and close shutter by toggling this button.



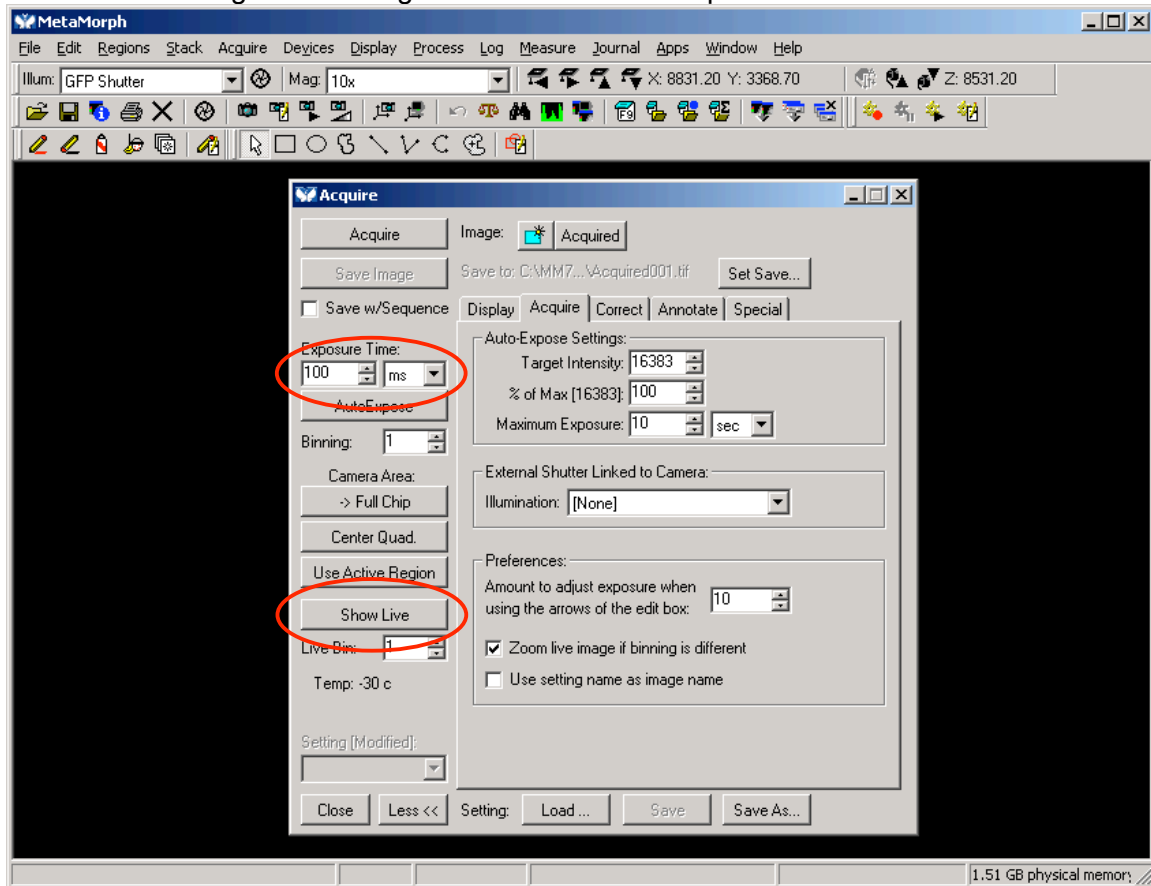
Magnification menu is for changing objectives on motorized microscopes.



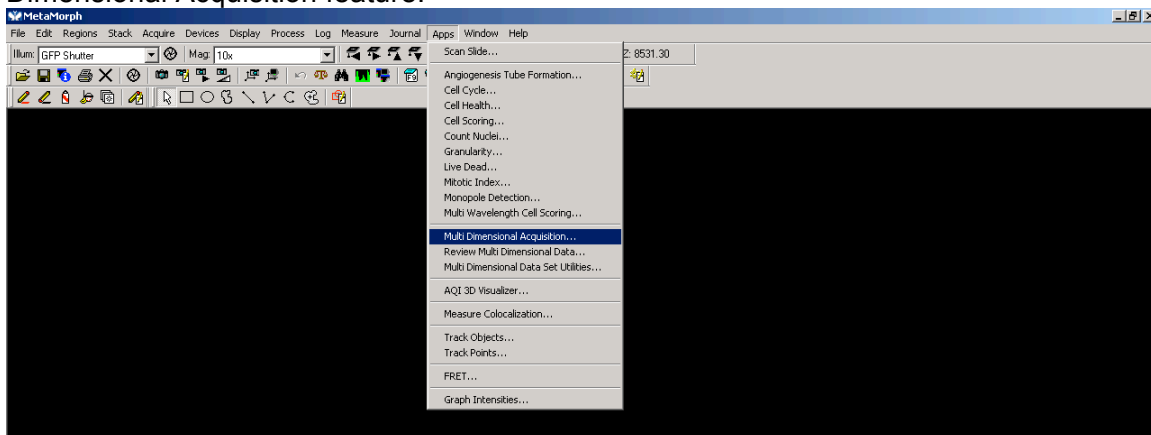
Acquire menu for grabbing images from digital cameras.



Acquire menu for snapping single images. Adjust Exposure time by adjusting Exposure Time while looking at Live image. DON'T USE AutoExpose!



Apps menu is the one you need to use for Time-Lapse imaging. Use the Multi Dimensional Acquisition feature.



Depending on the microscope you will have control of the X-Y stage, Fluorescent turret (Wavelengths) and the focus (Z Series).

